

DIAPER BAG DIRECTIONS

Disclaimer: These instructions are guidelines. There may be alternate sewing methods.

ITEMS IN DIAPER BAG KIT:

Large bag fabric piece (25" x 36"), one pocket fabric piece (25" x 25"), one long strap (60" x 2")

NOTE: Kit is usually provided with fabric edges already serged.



Bag fabric tends to be heavier than other items. It is best to iron pieces before and during sewing.



Hem the bag part (short side – 25") and the pocket part on both the top and bottom edges. Leave sides with serged edges.

Fold the top and bottom edges (the short 25" sides) of bag and sew hem.



Set pocket fabric on top of bag fabric with right sides up on both pieces.

Sew a seam in the middle to attach the pocket fabric to the bag fabric. This defines the bottom of the bag.



Position strap circle to bag. Straps should be approximately 5" from each long side of the bag.

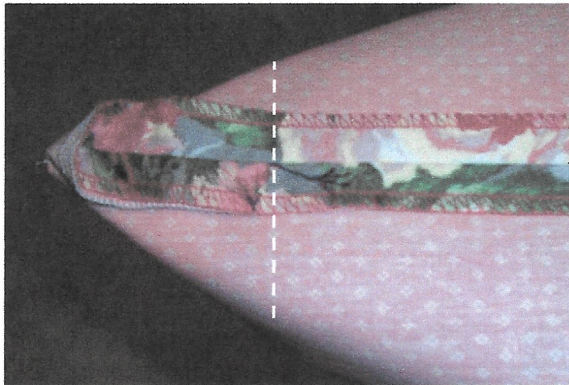
Make sure strap handles are not twisted before sewing strap to bag.

Sew straps down over both hems.

Turn bag inside out. Sew side seams.



A large seam allowance is helpful. Be sure pocket material is captured in the side seam also.



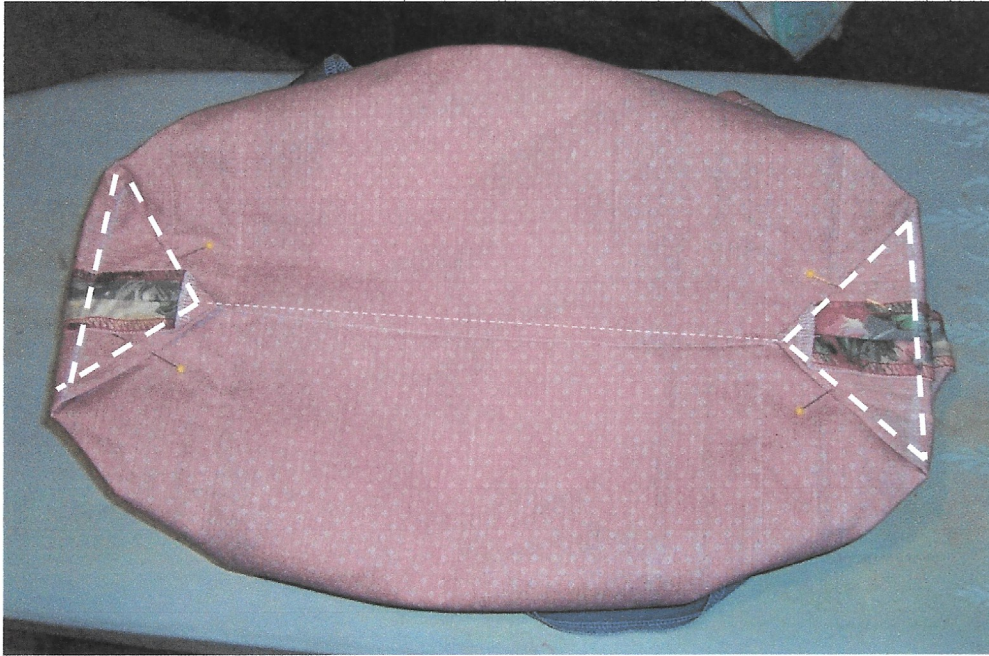
Iron the side seams flat. Dotted line indicates next step below.



Turn bag inside out.
Measure approximately 2 ½ "down from seam point.
This continues to define the bottom of the bag.

Sew across the side seam creating a triangle. Repeat this on the other side seam.

Triangles set the width of the bag bottom.



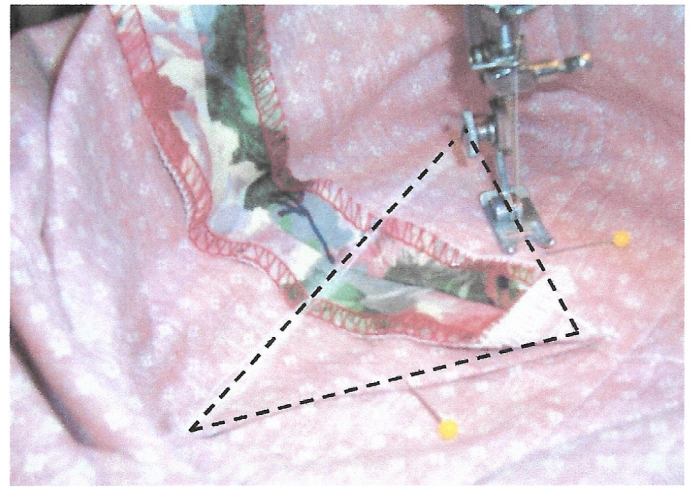
Bottom view of triangles to be sewn.

OPTION 1: Sew triangles to flatten the bottom.

OPTION 2: Sew a quick seam across just the point of the triangle to hold down the flap.



Sew triangles from the inside of the bag.



View of bag bottom after sewing triangle seams.



Note extra seams on all straps to add strength to the handle.

Sew a box with an X to add stability to each strap.

COMPLETED BAG

DIAPER BAG – ALTERNATE OPTION FOR FINISHING BOTTOM

Pin side seams. At the bottom, push the bottom seam into the seam to create a pleat. The larger the pleat, the wider the bottom will be. Pin the pleat down. Be sure to capture the inside point of the pleat into the side seam. This may require a slightly wider side seam than usual.



Be sure to capture the inside point of the pleat into the side seam. This may require a slightly wider side seam than usual. Repeat on other side





The finished bag will have the pleat sewn into the side seam.

NOTE: For this option of the bag, the triangle that creates the bag bottom is now on the outer side of the bag.

This avoids sewing the bottom triangles on the inside of the bag.